

Creating Stunning Slide Shows in Proshow Gold

Proshow Gold® and *ProShow Producer*® are becoming very popular for creating slide shows that go far beyond slide shows consisting of transparencies, slide projectors and slide dissolve controls. Instead of showing one slide fading into another, fading into another etc., shows can now include many special effects like panning, zooming and rotating; often called the ‘Ken Burns’ effect, in reference to a documentary filmmaker who popularized the use of motions on a still image.

Stan Ashbrook,
FPSA
Largo, Florida

Version 4 of *Proshow Gold* and *Producer* provides features which make it easier to create stunning slide shows that will dazzle your viewer. This article, highlighting the use of some of these features, is an excerpt from the **Proshow Gold/Producer 4.0 Video Training CD** that is available from the Web site at <http://www.computerphoto.org/pages/videos.html#proshow>. All features in this article are available in both *Proshow Gold* and *ProShow Producer 4.0*.

Please note that these programs are only available on the Windows platform, both Windows XP® and Vista® compatible.

A good workflow for creating a slide show is to select your images in slide editing software, edit them and then sort the edited images into the proper show order. This simplifies sorting the images once they have been brought into *ProShow Gold*. Sorting can be done in *Photoshop Bridge*®, *Lightroom*® or *Photoshop Elements*®. To maintain the sorted order the images must be renamed starting with the prefix 001, for example, 001_file name.tif.

Note that there is a free plugin for *Lightroom* available on the Photodex web site. This allows you, after editing your images in *Lightroom*, to sort them and then export them directly into a *Proshow Gold* or *Producer* slide show.

Note that it is not necessary to resize your

digital camera images or save them in compressed jpeg format, and in fact doing so could affect the image’s quality in a show. The size of your original images has no effect on the file size of the show that you create; the show file size is determined by the Show output settings.

With your show images edited and sorted into the proper show order and saved in a folder it is easy to add all the images to the Slide List in *Proshow Gold* by right-clicking an image in the File List and then choose **Add to Show**. *Proshow Gold* makes the right-click very powerful which will be explained in more detail in this article.

If the images you add to the slide list contain a mixture of both landscape and portrait images, they will not all display correctly. Portrait image could have the tops and bottoms cut off or landscape image may not fill the screen in the vertical. How they are displayed depends on the default **Scaling** that is set in the *Proshow Preferences*. See *Figure 1*. You can set the default scaling in the **Edit menu > Preferences > Show Defaults**. For landscape type images pick **Fill Frame** and for portrait type images, **Fill Frame** under **Default Image Settings, Scaling**. If the majority of your images are landscape choose **Fill Frame** for your default. You can change the portrait images easily and *version 4* makes it even easier than before.

You can change the scaling in **Slide Options > Layers > Layer Settings** or you can now, in *version 4*, change the scaling in the Slide List by using the right click. You change the scaling of a single vertical image or a group of vertical images by right clicking on one of the selected slides and then choose **Customize Slide > Scale Slide Image > Fit to Frame or Fill Frame**, depending on your need. There is also a Shortcut, **Alt+1**. See *Figure 2*.

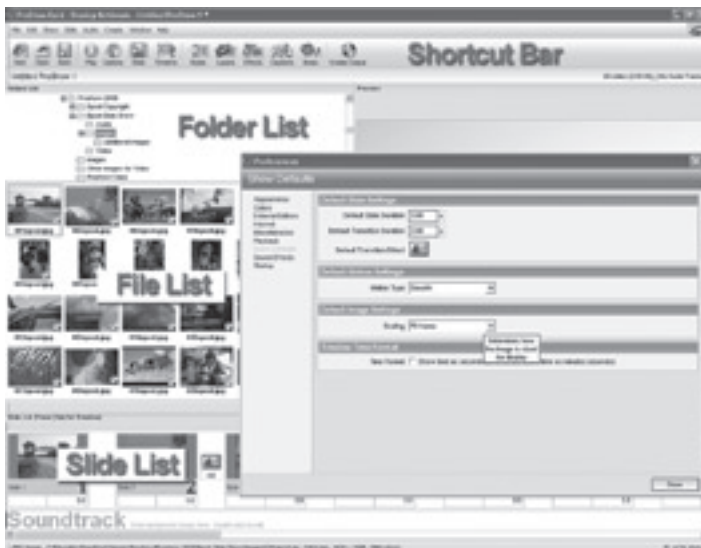


Figure 1



Figure 2

One of the features of *Proshow Gold* and *Producer* that makes it easy to create unique image motions, photo montages, and other creative effects is that each slide can have an unlimited number of image layers.

Those who have been using *Proshow* know that you add an image to a slide as a layer in the Slide List by clicking the image in the File List and dragging it with the Control key pressed to the slide in the Slide List. In *v4.0* you can now add multiple images as a layer on a slide in the Slide List by selecting the images you want to add in the File List and drag them to the slide in the Slide List with both the **Ctrl** and the **Alt** key pressed.

When you add your sorted images to the Slide List you will have many images that you would like to be layers on a slide instead of just being single slides. In prior versions you would have to delete the slides from the slide list and then add them one at a time by dragging with the Ctrl key. In *v4.0* you now have several choices. First if you have multiple slides in the Slide List that you would like to combine as a single slide with each image on a layer, select these slides and then right click and choose **Combine Slides**. If you would like to add the selected slides as layers on another slide select these slides and right click and choose **Cut**. Next click on the slide in the Slide List where you want the selected images to be added as layers and right click and choose **Paste Into**.

You can also add images as layers to a slide from the **Slide Options** window. *Proshow* provides multiple ways to open the **Slide Options** dialog box. First you can pick **Slide Options** from the Slide menu. The Slide menu has various options that relate to an individual slide. The **Slide Options** dialog box has five tabs titled **Slide**, **Layers**, **Effects**, **Captions** and **Sounds**. See *Figure 3*. You can choose any of these options directly from the Slide menu. You can also open the **Slide Options** box by clicking the **Slide** Icon in the Shortcut Bar. You can also open the **Layers**, **Effects**, and **Captions** options by clicking their icon on the **Shortcut** bar. Finally you can



Figure 3

open **Slide Options** or any of the various options by right clicking on any slide and choosing **Customize Slide** and then choose the option you want. Double Clicking any slide will open the **Slide Options** box with the last used option tab open and this is the easiest and quickest way to open **Slide Options**.

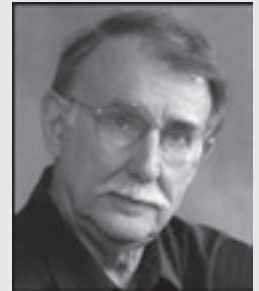
In the **Layers** pane in the **Slide**, **Layers** or **Effects** box you click the + icon to add an image as a new layer or the - icon to delete a layer. You can right click a layer and remove it, duplicate it as a new layer or copy this image layer to other slides. You can also edit the image by clicking **Open in Layer**. This will open your image in the image editor you specified in Preferences. There is also a small button under the small preview window for opening your image editor and editing your image.

In **Slide Options** you'll find Motions under the **Tab Effects**, **Motion Effects**. In *v4.0* the preview windows are larger and you'll also find next to the preview window a few handy tools. At the top is the right arrow for previewing this slide. Under this is a small magnifying glass with a + symbol. Clicking this gives you a larger preview window. In the Motion Effects window is an icon right under the Arrow preview icon which is **Copy Motion Effects**. This will provide six choices that are very useful. A favorite of mine is **Copy Start to End** which copies all settings in the Start Position to the Ending Position.



Figure 4

Version *4.0* has a new option in Slide Options. See *Figure 4*. This new option is called **Styles**. **Slide Styles** are pre-made effects that you can apply to any slide in your show. Just click on a slide that could be either a single slide or a layered slide and add a **Slide Style**. The rest is done for you. You will have slick, professional-looking effects in an instant and these can be modified for the effect you want in your show. Any of the motion effects you create on your slides can also now be saved as a Style to be used at any time in the future. Photodex is making additional styles



Stan Ashbrook, FPSA

Any mention of products or services in this article or anywhere else in the *PSA Journal* does not constitute an endorsement or approval of those items.

available on their Web site. At the time of writing this article they have released StylePack Vol. 1.

Music is a very important part of creating impressive slideshows. *Proshow* makes it easy for you to add music to your show. I like to add my background music after the show is created. The status bar in the upper right-hand corner of the main window tells me the length of the slide show I'm creating and this helps me pick the music and the length of the music that I need. It is now easier in v4 to edit your sound tracks. Once you have your music tracks selected you can choose **Timeline** from the Shortcut bar and you have an expanded view of your sound track. You can use the **Timeline** view to customize the soundtrack in your show without ever leaving the main workspace.

In the **Timeline** view you have access to Audio controls that let you decide where the track begins, choose how long the track plays, set fade-in/fade-out timing and even create cross fades from one track to the next, all without leaving the main workspace. This will save you time and allow you to see how the soundtrack relates to the show itself. It also makes it easy to change your soundtrack to match your show, because you can see both the **Slide List** and the **Soundtrack** at the same time.

One slick new feature is the ability to either start or stop a soundtrack at a specific time to match your slide show. If you right click the track at this time you have the choice of **Start Track Here** or **Stop Track Here**. Using this feature you can end a track at the exact time your show is over. See *Figure 5*.

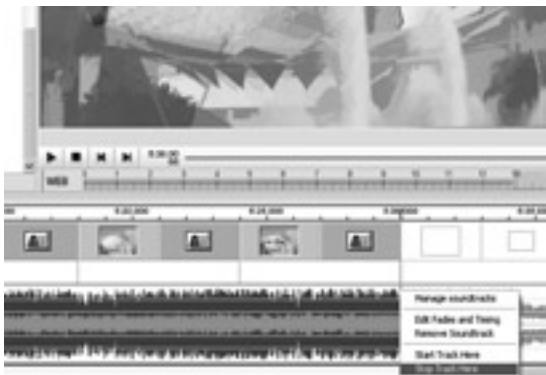


Figure 5

It is possible only to provide a short overview of some of the new features of these multi-featured programs.

If you have not tried *ProShow Gold* or *Producer 4.0* you may download a free 15 day trail from Photodex at www.photodex.com. If you own *Proshow Gold* and would like to upgrade to *ProShow Producer*, use Photodex a Customer Loyalty Program that offers discounts of up to \$100 depending on how many years you have owned *Proshow Gold*. For details visit the Photodex Web site. ■

Manuscript Mechanics

Attention all Contributors to the *PSA Journal*

For over 70 years, PSAers have been writing articles for the *PSA Journal*. Tremendous changes have taken place in both the photographic industry and in the printing industry. While many of the key elements of preparing a manuscript for publication are the same, new technology has brought some new requirements.

The current method for submission of material for the *Journal* is via e-mail. Simply attach your Microsoft® Word file to the e-mail and send it to the *PSA Journal* Editor at editor@psa-photo.org. If your e-mail program does not allow you to send attachments, copy the text from your word processing program directly into the body of the e-mail. Providing a digital file for your typewritten text allows immediate use of your document because it does not have to be re-typed and is a very efficient way to ensure that your submission is exactly as you typed it (with the exception of any editorial changes deemed necessary). If you do not personally have e-mail, please ask for help from a friend or relative to send the submission to the Editor for you, after you are satisfied it was typed accurately. Contact the Editor or the PSA Publications Vice President if you have trouble finding a typist. Don't use all capital letters. When you type your article, use regular type, not script, and use upper and lower case letters. It is no longer necessary to double-space the text or leave wide margins. Do not do so. Please do not justify the right-hand margin.

When sending accompanying photos, digital submissions are preferred. The digital files should be prepared for offset printing: uncompressed TIFF files are preferred; converted from RGB (color space used by digital cameras) to CMYK; in the file names, do not use punctuation or symbols, use file names that help identify the image and do not duplicate the name. Resolution should be at the offset-printing standard of 300 dpi. All files submitted for publication in the *PSA Journal* must be 300 dpi. Do not over-sharpen your image at any stage.

You may also send prints or slides which will be scanned according to the size at which they will be printed and at the brightness and color levels based on the settings our commercial printer uses. Send more images than can be used and send both horizontals and verticals: the Editor will select suitable images. Also, we will know at the time of scanning whether an image needs to be scanned as a grayscale or color image, as that affects the output too. **We cannot use glass-mounted slides.**

Please meet our deadlines. We have a two-month lead-time for all scheduled material. All non-scheduled submissions are used when the Editor can work them into issues. If you are submitting an article for a particular issue, your finished article needs to be into the *Journal* editor 60 days before the first day of the issue month. We do not write articles from your notes; we use your prepared document, subject to editing.

If you have had an article on file at the *PSA Journal* office for a long time, it is possible we have just not had the space, or we needed to use other articles first to meet PSA guidelines, emphasize a theme, or balance the content. We will, however, return it upon your request. Occasionally some material never works into the magazine and has to be returned.

We appreciate all of the PSA authors. Thank you for making your mark for the advancement of photography and helping others learn from your experience and expertise.